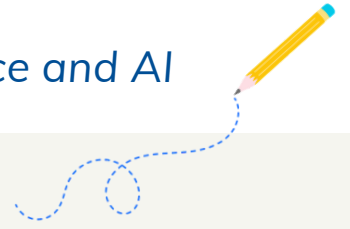


The Evolving Educator

Building an Intentional Relationship Between Your Practice and AI



KEY IDEAS

1. The expert in the room is YOU.

Educators do not need to become AI experts overnight. Your instructional knowledge, relationships with students, and professional judgment remain central to meaningful learning.

2. AI integration can happen intentionally.

Strong AI-supported teaching practices are grounded in authentic learning goals, purposeful prompting, reflection and revision, and human-centered decision making.

Highlights and Resources



Reflection Questions for Summer Planning

- One practice I want to keep...
- One practice I want to let go of...
- One pro tip I learned from a colleague...
- One pro tip I learned from a student...



Research Says: Experiment, Reflect, Collaborate

Educators integrate AI best when they have time for hands-on prompting practice, protected exploration time, peer collaboration and shared examples, and authentic classroom application time.



Resources to Explore

Serena Morales

- [Promptwise Substack](#)
 - [Human-in-the-Loop Pedagogy](#)
 - [Purposeful Prompt Design](#)
 - [Evolving Assessment](#)

Serena's book
release fall 2026:
Unprompted:
Designing Authentic
Assessment in the
Age of AI

National Writing Project

- [Newsletter](#)
- [Blog](#)

NoRedInk

- [Free Writing Prompts](#)
- [On-Demand Webinars](#)