

The Evolving Educator: Building An Intentional Relationship Between Your Practice and AI

Featuring:
Dr. Tanya Baker &
Dr. Serena Morales

noredink





Dr. Tanya Baker
Executive Director
National Writing
Project



**Dr. Paige
Whitlock**
Literacy Director
NoRedInk



Dr. Serena Morales
Associate Clinical
Professor
Boise State University

Today



Welcome



Current state



Grounding us in Research



Panel Discussion



Q&A



Next Steps





**national
writing
project** + **noredink**



Our Mission

Through its mission, NWP focuses the knowledge, expertise, and leadership of our nation's educators on sustained efforts to help youth become successful writers and learners.



Our Mission

NoRedInk's mission is to unlock every writer's potential.



Check In...

1



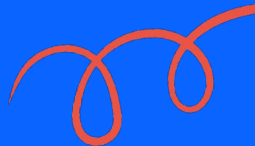
2



3



**How are you feeling about GenAI
and your teaching practice?**



Current Learnings



**Dr.
Serena
Morales**

- Associate Clinical Professor in Teaching, Learning, and Community Engagement, Boise State University
- Researches AI-integrated pedagogies
- Working to build a framework that informs teacher inquiry and use of AI
- Former middle school English teacher

“The expert in the room is you.”



What teachers (pre-service too) are saying:

AI Vertigo: the **cognitive overwhelm, emotional disorientation,** and **uncertainty** teachers feel when technological change outpaces the ability to process and apply it.

- Tool Sprawl
- Ethical Fear
- Falling Behind

What the research told us about teachers:

From Threat to Thinking Partner

Teachers moved from skepticism and fear to seeing AI as a pedagogical partner. Many described a decisive mindset shift.

Pedagogical Imagination

Concrete classroom applications emerged: lesson planning, differentiation, assessment design, and creative student projects.

Leadership Identity Emerged

Participants saw themselves as AI influencers and returned to their schools as guides and mentors.

What the research told us about professional development:

- Hands-on Prompting Practice
- Peer Collaboration and Shared Examples
- Authentic Task Application
- Protected Exploration Time

A framework for reflection

Take It.

What do you want to embrace?

Reclaim your time

Design to the edges

Speed up feedback

Leave It.

What will you choose to protect?

Your relationships

Professional judgment

Parent communication

Learn It.

What do you still need to know?

Plans for efficiency

Prompt literacy

Data & privacy

Educators , Reflection




**Rhonda
Urquidi**

- English Language Arts teacher at Bishop Kelly High School
- Instructional Coach with the Idaho State Department of Education
- Teacher Consultant with the Boise State Writing Project
- Leveraging her coaching and leadership experiences to investigate best practices using GenAI




**Cecilia
Pattee**

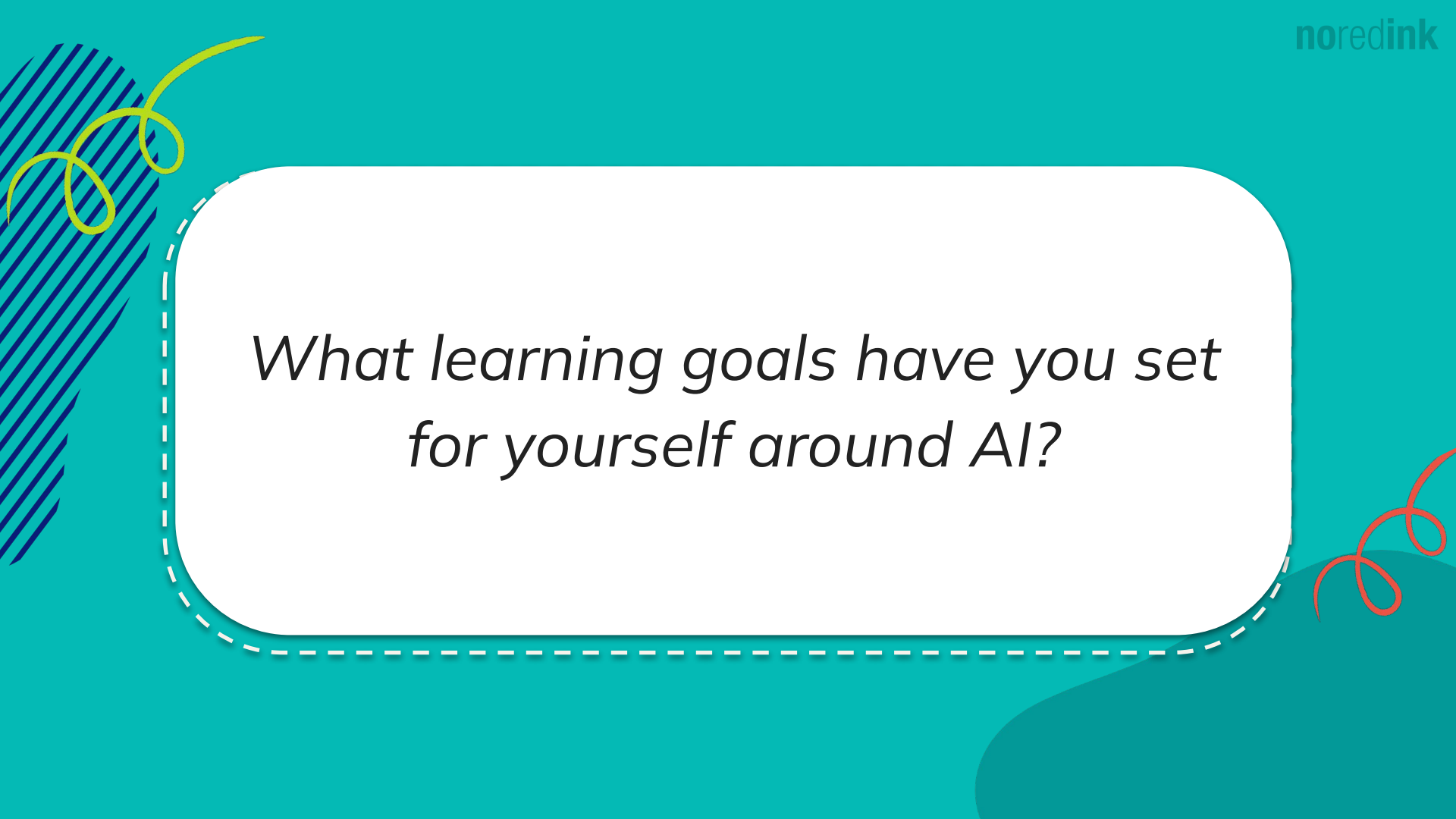
- Clinical Instructor at Boise State University
- Instructional Coach with the Idaho State Department of Education
- Teacher Consultant with the Boise State Writing Project
- Bilingual and ESL Educator (Nampa School District)



How have your personal experiences with GenAI influenced your professional work?



*How does AI impact how you think
about your practice?*



*What learning goals have you set
for yourself around AI?*

Rapid Round

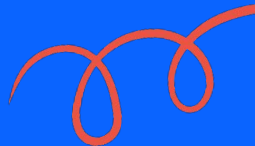
Reflect on the 2025-26 School Year

What is ...

- one practice you will keep?
- one practice you want to let go?
- one pro tip you learned from a colleague?
- one pro tip you learned from a student?

Q & A

Feedback



Supporting educators with reflection



noredink

Follow **Serena's PromptWise**. A weekly publication designed to help K-16 educators develop AI-integrated pedagogies by centralizing human expertise in the digital age. It provides a bridge between theoretical research, practice strategies, and decision frameworks needed to navigate a generative AI landscape.

- **Human-in-the-Loop Pedagogy:** ["The Question is Better Than the Answer"](#)
- **Purposeful Prompt Design:** ["Stack the Prompts"](#)
- **Evolving Assessment:** ["Reworking Your Best Work"](#)
- **And Coming from Serena this Fall: A new open PressBook!** *Unprompted: Designing Authentic Assessment in the Age of AI*